

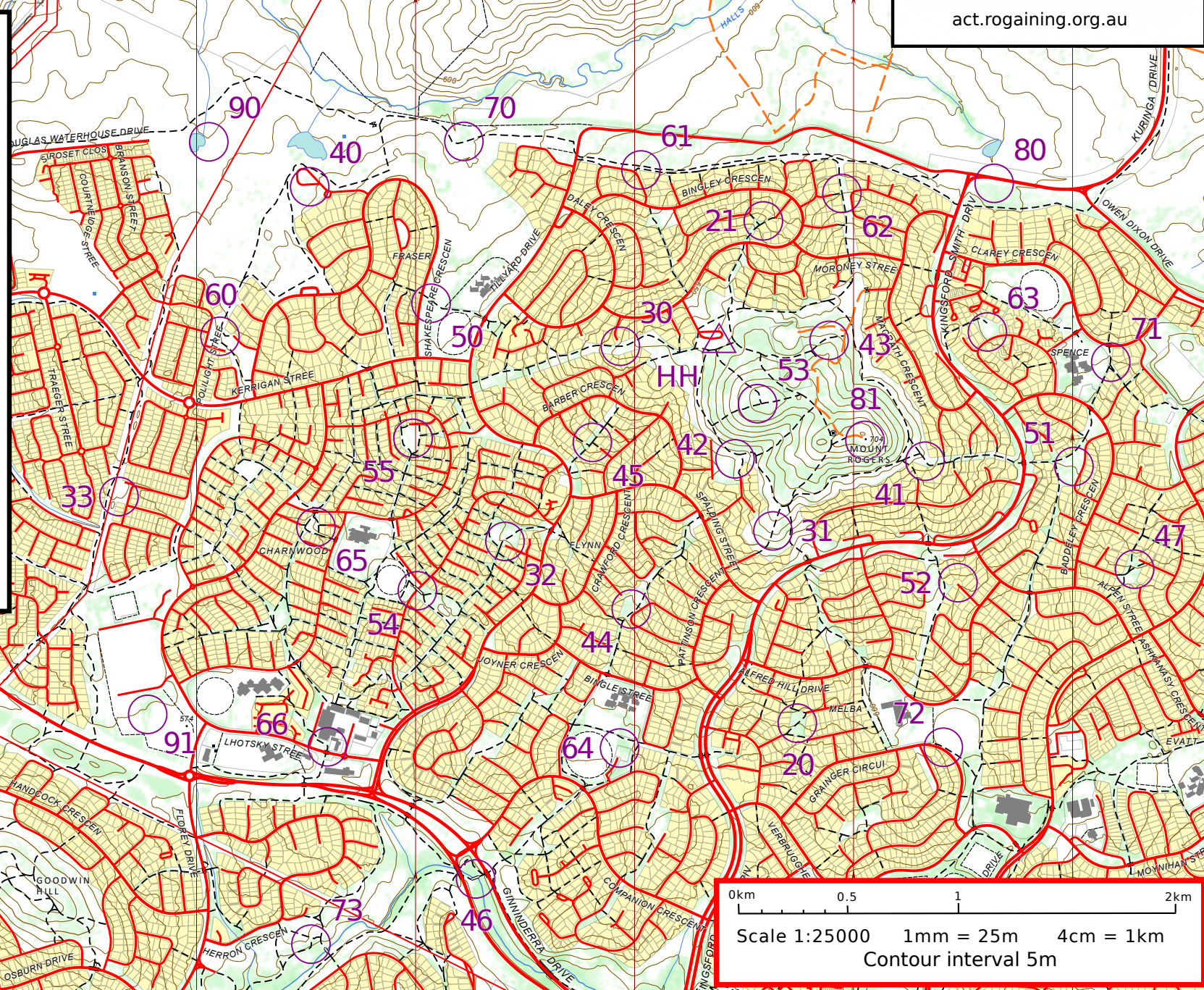
# Mount Rogers MapRun Mayhem

30 May - 08 Jun 2020 - Featuring pandemic-friendly contactless punching with MapRunF



act.rogaining.org.au

- 20 A set of stone steps at a playground
- 21 A light pole
- 30 A path junction
- 31 The track on the spur, at top of steeper part
- 32 End of a low wooden fence
- 33 A playground, southwest corner
- 40 A light pole
- 41 A boulder, 1.5 m high
- 42 A fence over a culvert
- 43 A rock, 5 m wide, 2 m high
- 44 A seat at a playground
- 45 The eastern path junction
- 46 Middle of the bridge
- 47 A basketball post in a playground
- 50 A seat at a playground
- 51 A seat at a playground
- 52 Centre of a circle
- 53 A wooden bench by a large tree
- 54 Middle of the bridge
- 55 A skate ramp, south end
- 60 Seats at a playground
- 61 The path at intersection with a wooden fence
- 62 The path junction
- 63 A dome
- 64 Southeast-most rock at a playground
- 65 Swings at a playground
- 66 A light pole
- 70 The track, 15 m southeast of southeastern fence corner
- 71 The northern path junction
- 72 A metal gate in a wooden fence
- 73 Steps, 10 m south of a playground
- 80 A covered culvert
- 81 The trig point
- 90 South end of an earth wall by the heart-shaped pond
- 91 A concrete tub in the woodland between playing fields



**Event Coordinator**  
Julie Quinn

**Setters/Vetters**  
Jon Glanville  
Julie Quinn  
David Baldwin

**MapRun**  
maprunners.weebly.com

